

# Friends Of Willow Park Inc.



Educating and involving the community in protecting, preserving and valuing parklands

## NEWSLETTER – May 2007

### World Environment Day Celebration

#### Free sausage sizzle

Sunday 3 June 12.30 pm

Willow Park BBQ

BYO other food, drinks and chair  
Gold Coin Donation Appreciated

All welcome!!

For further information – phone Stephen: 6056 6275

### World Environment Day

World Environment Day is commemorated each year on 5 June. This year the slogan is **Melting Ice – a Hot Topic?**

The Earth is warming due to emissions of greenhouse gases, such as carbon dioxide (CO<sub>2</sub>) from burning fossil fuels. The impacts of climate change are already visible.

The Arctic ice is shrinking and becoming less thick. The 4 million people who live in the Arctic are particularly vulnerable. They rely mainly on hunting and fishing, reindeer herding, trapping and gathering. All of this is at risk. Polar bears might not survive as a species.

By 2050 as many as 64% of China's glaciers will have disappeared. An estimated 300 million people in China depend on water from glaciers for their survival.

Sea levels are rising. As sea levels rise, people who live in low-lying and coastal cities face inundation.

An increase in hunger is expected in Africa.

In 2005, economic losses due to weather-linked disasters such as tropical storms and forest fires were estimated at more than US\$200 billion.

Continued global warming is expected to cause more widespread infectious diseases such as malaria and dengue fever, and infections such as salmonellosis.

There are many options available to avoid catastrophic climate change. These include worldwide improvements in energy efficiency and a shift to low-carbon and renewable resources such as solar and wind power, bio-energy and geothermal energy. Another is to plant trees. They can slow climate change by absorbing carbon dioxide. Trees also help reduce pollution, keep cities cool, protect water catchments and reduce soil erosion. [Adapted from promotional material available from United Nation's World Environment Day website: [www.unep.org/wed/2007](http://www.unep.org/wed/2007)]

On this World Environment Day, let us carefully consider our actions. For ideas about what you can do to save energy go to our website: [www.vicnet.net.au/~fowpwod](http://www.vicnet.net.au/~fowpwod)

### Conserving biodiversity in an urban landscape

*Friends of Willow Park* had two amazingly inspiring guest speakers at their meeting on 17 April. Ron Herbert and Glen Johnson are very active members of Baranduda Landcare.

Glen provided aerial maps of Willow Park that clearly showed the vital importance of the parkland and House Creek corridor for biodiversity conservation in urban areas. Using a comprehensive set of slides, Glen demonstrated the impact that weeds are having on House Creek.

**Patrons:** Professor David Mitchell, Professor Allan Curtis, Dr Juliet Bird

**Postal Address:** c/- P.O. Box 1083, Wodonga, 3689

**Website:** [www.vicnet.net.au/~fowpwod](http://www.vicnet.net.au/~fowpwod)

**Phone:** Julie: (02)6056 1787, Gerard: (02) 6056 1600, Brydie: (02) 6059 5498, Stephen: (02) 6056 6275, Kim: (02) 6024 3023, Ali (02) 6056 1938

Ron showed us his nesting boxes, which are being used by Baranduda Landcare to provide a home for birds and tree-dwelling animals. Nesting boxes have been found to be very important in areas where there is enough food and water, but few hollows for animals and birds to build a home.

Both Ron and Glen emphasised the opportunities for projects such as removing environmental weeds, planting indigenous species and installing nest boxes. These help to improve and enhance parklands and waterways for current and future generations. Thank you so much Glen and Ron! You have inspired us to take action. *Friends of Willow Park* has begun talking with Northeast Water Catchment Authority and the City of Wodonga about the role the community might play in helping restore House Creek.

Are you interested in working on a project to help remove weeds and plant indigenous species along House Creek in Willow Park? If so, call Alison (6056 1938) or Geoff (6024 1446).



Geoff Emmanuel, Chris Parnaby, Jean-Maree Guitez-Christesen, Ron Herbert and Glenn Johnson, at the April members' meeting.

### ***Members' and Friends' Meeting***

Wayne Carlson of Parklands Albury Wodonga will be the guest speaker at our next meeting. Wayne will speak on Parklands Albury Wodonga and potential partnerships with FOWP.

All members and lovers of Willow Park and other parklands are welcome to attend.

**When?** Tuesday 19 June, 2007

**What time?** 7.30 p.m.

**Where?** Belvoir School, 4 Bowman Court, Wodonga

**RSVP:** Contact Stephen on 6056 6275

Further information about the connection between parks and people can be found on the internet at:  
Parks Forum - <http://www.parksforum.org/>  
Parks Victoria - <http://www.parkweb.vic.gov.au/>  
International Federation of Park and Recreation Administration - <http://www.ifpra.org/>  
United States Forest Service - <http://www.fs.fed.us/>  
IUCN - <http://www.iucn.org/>

### **Parks and People – a critical connection**

Two of our members attended the recent Parks and Community Seminar hosted by Parks Forum and Parks Victoria. It was a wonderful day with inspirational and fascinating talks by international guest speakers.

George Stankey, a former social research scientist with the United States Forest Service in Oregon, spoke about the importance of political will and good governance. "The community has an important role in shaping that will and governance," said George. "Park managers need to seek a broad range of knowledge and views when making their decisions about parklands." *Friends of Willow Park* agrees that it is important for the community to express its views at every opportunity.

The second speaker was Rob Small, President of the International Federation of Park and Recreation Administration. He is well-known for his work on urban parklands in New Zealand and Australia. Rob spoke about the need to view our parklands holistically. "Our urban, regional, state and national parks each contribute to a 'system' of parks with interdependent roles and functions," said Rob. "What we do in one place affects another."

A clear message from Rob was the environmental, social, economic and cultural importance of urban parks. One interesting social value he reported is the impact of parks on patient recovery – the recovery rate is 50% faster when patients can view parkland. This highlights the potential importance of Willow Park to the patients of the nearby private hospital.

Graeme Warboys is the Vice Chair of the World Conservation Union World Commission on Protected Areas. He spoke about the worldwide increase in protected areas in the past 30 years. "This increase has been driven by community demands as understanding of the values of these spaces has increased," said Graeme. Like Rob, Graeme also spoke about the need for an holistic approach to our parklands and the importance of partnerships and alliances with park managers and the community.

*Friends of Willow Park* is developing working relationships with the relevant managers of the park (City of Wodonga) and House Creek (North East Catchment Management Authority).

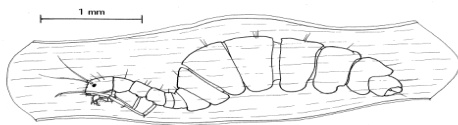
## “Walking Sticks” found in Willow Park wetland

Our Waterwatch monitoring group has found that many macroinvertebrates (bugs) live in the Willow Park wetland. Among them are the remarkable caddisflies or “walking sticks”. Scientists know these amazing bugs as members of the Class Insecta and Order Trichoptera. Caddisflies are medium-sized insects. There are about 10,000 known species throughout the world and approximately 600 of those have been observed in Australia.

Caddisflies have five stages in their life – four of these are spent in water and then a moth-like caddisfly eventually emerges as the fifth life stage. Caddisflies are a very important part of the ecology of freshwaters. They provide food for fish and other predators and they eat smaller things such as leaves, algae and smaller bugs. Fishermen have long known that the caddisfly is wonderful bait for fly fishing!

The caddisfly that our group found in the wetland in Willow Park was the case-making type of larvae. These make their home from hollow leaves of aquatic plants and look for food by pulling themselves around the water by their front legs. As a consequence they look like walking sticks!

Caddisflies live in all sorts of areas and all sorts of water bodies. Some live happily in very saline waters, for example. Finding a number of different types of caddisfly, along with many other types of insects such as damselfly and mayfly, indicates good water quality.



A caddisfly hiding inside its case made from a hollow aquatic plant leaf. Scientific name - *Helyethira malleoforma* (family Hydroptilidae). Illustration courtesy of SA Waterwatch

### *Waterwatch schedule:*

27 May at 3.30 p.m. – Water quality and bugs  
24 June at 3.30 p.m. – Water quality and bugs

Meet near the skate park

**Come join us! Contact Alison on 6056 1938.**

## Upcoming Event – Home Efficiency Workshop

Felltimber Community Centre is hosting a Home Efficiency Workshop with Paul Nieuwerth from 7 pm to 9.30 pm on Tuesday 29 May. The workshop has a very practical focus and will explore energy use in the home, how to minimise energy costs, the principles of passive solar design, heating and cooling systems, hot water, appliances, lighting and much more. The cost for the workshop is a modest \$5 and bookings must be made by calling (02) 6043 4550, email [cfelltimber@wodonga.vic.gov.au](mailto:cfelltimber@wodonga.vic.gov.au) or at the Felltimber Community Centre, corner of Melrose Drive and Felltimber Creek Road.

## Thanks to Council Staff

In recent months there has been very positive feedback on the activities of Council workers in maintaining the Willow Park environment. On two occasions Laurie Fitzsimons of 5 Flower Place, whose property abuts the park, has had reason to be especially thankful. After the strong winds earlier this year a number of fallen limbs and small trees had fallen over the fence in the park. However, before he could get in with a trailer, Council workers had grabbed the lot with their front end loader and disposed of them. The same thing happened recently after he had chopped down a dead tree on the neighbour's property.

He greatly appreciated the assistance that was given.

### Watch for our next newsletter!

Milton Kimball, the Border's own gardening guru, will share some of his vast experience and knowledge.

## Contributing to our newsletter

If you have an item of interest for inclusion in our newsletter, please contact Laurie Fitzsimons: 60 245974 or email [ldfitz@bigpond.net.au](mailto:ldfitz@bigpond.net.au)

# FRIENDS OF WILLOW PARK

## Membership Form

NAME: \_\_\_\_\_

ADDRESS: \_\_\_\_\_  
\_\_\_\_\_

CONTACT PHONE NUMBER: \_\_\_\_\_

EMAIL: \_\_\_\_\_

*Friends*



*Of  
Willow Park*

### MEMBERSHIP CATEGORIES AND FEES:

- \$10 concession, students, individuals, concession household
- \$20 households

Note: the membership fee can be waived in situations of hardship

I wish to join Friends of Willow Park. I agree to be bound by the rules of the Association and to support the group's objectives (attached)

Membership category: \_\_\_\_\_

Payment: (circle) Cash/Cheque  
Cheques payable to: Friends of Willow park Inc.

SIGNATURE: \_\_\_\_\_

### Participating in Friends of Willow Park

*Friends of Willow Park* is an active group and we encourage you to get involved. Please indicate how you would like to participate (you can tick as many of these as you want).

- Helping with the campaigns to save Willow Park from undue development
- Being part of the Committee of Management
- Helping with the newsletter
- Walks, talks, tours, socials
- Hands-on environment projects
- Water quality testing
- Information stalls and publications
- Interest Groups
- Fundraising

Send your completed form to:  
Friends of Willow Park Inc.  
c/- P.O. Box 1083, Wodonga, 3689  
Wodonga, 3689

### OUR OBJECTIVES

- (a) To promote the protection and preservation of Willow Park as public open space parkland;
- (b) To promote the protection and preservation of the social, economic and environmental value of Willow Park including the flora, fauna and features (scenic, archaeological, geological, historic or scientific);
- (c) To educate and inform the community about the role and value of Willow Park; and
- (d) To foster community involvement in, and enjoyment of, Willow Park in accordance with the above objectives.